

Service
Service
Service



Service Manual

TABLE OF CONTENTS

	Page
Specification and Service Hint	1
Instruction for use	2
Mechanical Instructions	3
Blockdiagrams	4
Electrical diagrams	5
Component layout	6
Exploded view & Service parts	7
Electrical Parts list	8

© Copyright 2003 Philips Consumer Electronics B.V. Eindhoven, The Netherlands
All rights reserved. No part of this publication may be reproduced, stored in a retrieval system or transmitted, in any form or by any means, electronic, mechanical, photocopying, or otherwise without the prior permission of Philips.

Published by MD 0351 Service Audio Printed in The Netherlands Subject to modification

3104 215 50230

Version 1.0



PHILIPS

TECHNICAL SPECIFICATION and SERVICE HINT

General

Dimensions (WxLx H)	:54,3x84,5x18,3mm :2,2x3,4x0,7inch
Weight	: 93g. 3.3oz
Output power	:2 x 5mW (16 ohm)
Frequency response	:20 - 20.000Hz
Equalizer	:5 band DSP controlled
Hard disk	:1,0" micro HDD
Capacity	:1,5GB
Display	:Black/White :128 x 96 pixels
Backlight	:White Led
Battery	:750mAh Lithium Ion(Li-Ion)
Battery life time	:>10hr
File transfer rate using USB	:800kbyte/s
Battery charging current	:600 -700mA
Maximum charging time	:2,5hr
Battery cutoff voltage	:3,4V
Connections	:Stereo headphone :Mini USB (B-type) :DC charger input

Battery level detection

Detection Level	Typ.
3-step to 2-step voltage	3,95V
2-step to 1-step voltage	3,8V
1-step to 0-step voltage	3,7V
Low Batt. Warning voltage	3,55V
Force Power Off voltage	3,4V

Current consumption

DC-IN SUPPLY (5.0V)	
Battery Charging Current	600mA typ.
BATT. SUPPLY (4,8V)	
Power Off	240uA
Ldle with LCD Backlight on	50mA typ.
Playback without HDD reading	50mA
Playback with HDD reading	350mA
File tranfer using USB1.1	350mA

Service Hint

To replace the Hard disk (HDD) please follow the next instructions:

- Replace the HDD (the delivered HDD are empty and formatted).
- Start up the device.
- Connect the device via USB to the computer and start up the **Digital Media Manager (DMM)**.
- The DMM start to make the new structure on, and an empty database.

Headphone out (headphone output load 2x16 ohm)

Maximum output power	:+/-10mW
Frequency response	:20Hz - 20kHz
SNR (A-wght)	:80dB typ.
THD (1kHz)	:0,01% - 0,1%
Left-Right Channel Separation	:32dB typ.
Left-Right Channel Balance	:0,5dB
Volume control	:+/-1dB steps

Supported playback format

MP3	:8 - 320 Kbps and VBR
WMA	:32 - 192 Kbps
Sample rates	:8, 11.025, 16, 22.050 :32, 44.1, 48
ID3-tag support	: Yes

PC Connectivity :USB

File Transfer :
via **PHILIPS Digital Media Manager** for music playback or Windows Explorer for general data (music playback disabled)

Firmware and software upgrades

For the best interaction between your HDD and your PC. check www.philips.com/support for the latest upgrades available.

Accessories

Accessories for	HDD060		
	/00C	/05	/17
AY3192 AC/DC Adaptor 3140 118 33800	X		
AY3192 AC/DC Adaptor 3140 118 33810		X	
AY3192 AC/DC Adaptor 3140 118 33820			X
Headphone HE570/77T 9082 100 02543	X	X	X
USB Cable 3140 110 22410	X	X	X




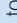
Quick Start

- 1 Charge the Battery**
Connect the supplied multi-voltage adapter/charger to the 5V DC jack on hdd and the main power supply. Charge 2.5 to 4 hours for 100% battery power. (Battery life may vary according to use.)
 - 2 Install DIGITAL MEDIA MANAGER (DMM)**
 - Insert the supplied CD into your PC's CD-ROM drive.
 - DMM installation will start automatically for first time users.
 - Follow screen instructions to complete installation.
- ATTENTION !**
WINDOWS 98 USERS :
To avoid installation problems, DO NOT CONNECT hdd to the PC until AFTER installation completes.
- 3 Connect your hdd and PC**
Connect your hdd to your PC using the supplied USB cable, with hdd powered by supplied adapter. The USB connection screen will automatically appear.

- 4 Organize and Transfer Music via DMM**
 - Launch DMM on PC from Windows desktop or Start menu.
 - Use DMM to organize your music.
 - Transfer music files from your PC to your hdd.

Note:

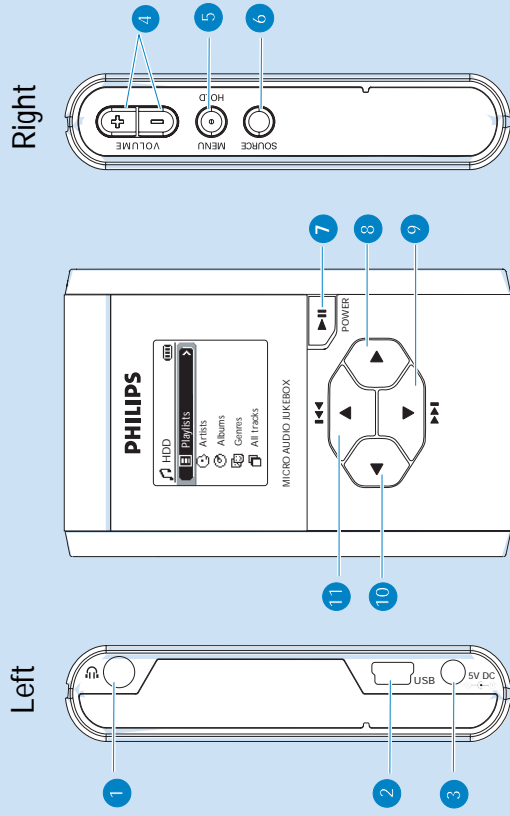
 - DMM cannot rip MP3 / WMA files from CDs. You will need additional software to do this.
 - hdd will play MP3 / WMA files only if they are transferred using DMM.

- 5 Safely Disconnect hdd and Enjoy Music on the go**
 - Exit DMM by clicking the pull-down menu **File** → **Exit**.
 - Disconnect hdd safely from your PC by clicking  on the task bar to avoid file error. (WINDOWS 98SE users: there is no  icon. Simply disconnect hdd after file transfer completes.)
 - Press and hold  to switch on hdd if the hdd screen doesn't automatically appear. Use scroll controls to browse and press  to enjoy music!

Overview of Connections and Controls

ENGLISH

- ① Headphones jack
- ② USB
- ③ 5V DC
- ④ VOLUME + / -
- ⑤ MENU/HOLD
- ⑥ SOURCE
- ⑦ On / Off and Play / Pause
- ⑧ Right
- ⑨ Next / Fast forward / SuperScroll™
- ⑩ Left
- ⑪ Previous / Rewind / SuperScroll™



Playback

- 1 Press **SOURCE** for music library options.
- 2 Press **▲** to scroll up or **▼** to scroll down for your option.
Press **▶** for next or **◀** for previous levels of library
- 3 Press **▶||** to play or pause your selection.



The **▶||▲** and **▼** keys are multi-functional. They work according to how you press them: press halfway down, press down fully, or press and hold.

Understanding hdd Display

hdd has an intuitive display to show various information:

	Battery level indicator		DC power connected
	Playlist		Album
	Genres		Artists
	All tracks		Equalizer (EQ)
<	Previous menu / library level available	>	Next menu / library level available
	Repeat once		Repeat all
	Shuffle	DBB	Dynamic Bass Boost selected
	Option available for selection		Option selected
	Keys locked		

6

Using hdd Controls

ENGLISH

Troubleshooting	Controls to press
Reset hdd	Press and hold ▲ + [VOLUME +]
Restore hdd factory settings	Press MENU/HOLD ; scroll to Restore settings . Press ▶ to confirm
Basic Operation	Controls to press
Switch hdd on / off	Press and hold ▶
Call up library options	Press SOURCE
Lock keys / release locks on hdd	Press and hold MENU/HOLD
Go to different levels of menu	Press ▶ for next and ◀ for previous
Scrolling and browsing	▲ , ▼ , ▶ , ◀ for up, down, left, right
Play music	Highlight selection and press ▶
Pause music	Press ▶ during playback
Fast forward in a track	Press halfway down and hold ▼
Rewind in a track	Press halfway down and hold ▲
Change volume	Press VOLUME + / -
Play next or previous track	Press fully down ▼ for next and ▲ for previous
SuperScroll™	Press ▲ or ▼ fully down and hold

7

Customizing Settings

- 1 Press **MENU/HOLD** for settings options. Press **▲** to scroll up or **▼** to scroll down for your option. Press **▶** for next or **◀** for previous levels of menu.
- 2 Press **▶** to confirm your selection by checking **○**.
- 3 Press **MENU/HOLD** or **◀** to exit the menu display. Options for each setting are shown on hdd's display.

Advanced settings and actions

Repeat / Shuffle	Play music tracks randomly (Shuffle) and / or repeatedly (Repeat)
DBB	Enable or disable Dynamic Bass Boost
Sleep timer	Set time to switch off hdd
Equalizer	Adjust sound settings
[>] key shortcut	Adjust ▶ key actions during playback
Display	Adjust time for display to go dark and contrast level
Auto shutdown	Set time for switching off hdd automatically to save battery power
Language	Set hdd display language
Information	Display hdd information
Restore settings	Restore hdd factory settings in case of troubleshooting

Personalizing Playback Order by Playlists

ENGLISH

- 1 Press **SOURCE** for music library options. **▲** to scroll up or **▼** to scroll down for your option; **▶** for next or **◀** for previous levels of library.
- 2 Press **MENU/HOLD** for playlist menu options for your desired option. Scroll to confirm **Add to Playlist**, **Create Playlist** or **Erase track**.
- 3 Press **MENU/HOLD** or **◀** to exit the menu display. (See page 12 to organize playlists with DMM.)

Using hdd as an External Hard Disk

hdd can be used as an external hard disk for storage and transfer of any data files. Note that music files transferred from the PC to hdd via Windows Explorer will not be able to play on hdd. Please always use **DMM** for music transfer.

Tip

- During USB connection, we recommend that you always use the supplied power adapter to avoid loss of data.
- Always remove USB connection safely (see Step 5, page 3).

About PHILIPS Digital Media Manager

PHILIPS Digital Media Manager (DMM) contains all the necessary software components you need to work properly with hdd. These include:

- MP3 and WMA transfer for playback on hdd.
- Paths and supporting links for DMM software and hdd firmware upgrades.

About Digital Rights Management

To protect certain rights of artists in the music industry, DMM and hdd are subject to certain playback restrictions known as **Digital Rights Management**. As a result:

- hdd will play MP3 / WMA files only if they are transferred using DMM.

Basic Operation

ENGLISH

Launching DMM

Launch DMM on PC from Windows desktop or Start menu.

Managing tracks and playlists

Select desired item(s) by clicking on checkbox(es).

Use drag and drop actions to move selected items between **PC Library, My Player** and **Playlists**.

Erase desired item(s) by clicking on checkbox(es) and press <delete> on your keyboard.

Click the corresponding icons to create playlists.

Managing Media Folders

To add / remove Media Folders, or to set refresh options, click **Preferences** → **Media folder**. Make sure your tracks in the Media Folders are of MP3 or WMA formats. Note that automatic refresh upon DMM start up is not recommended for large Media Folders.

Customizing DMM view








To resize DMM, click the resizing buttons, or select from the **View** menu.

IMPORTANT!

- Connect hdd to your PC via the supplied USB **BEFORE** starting DMM on your PC.
- During USB connection, we recommend that you always use the supplied power adapter to avoid loss of data.

The Main Screen: PC Library, My Player and Status Bar

The DMM main screen comes with **PC Library** (which displays the contents of your Media Folders) and **My Player** (hdd), along with these icons:

	Refresh	For updating the latest status of the selected window
	New	For creating a new playlist
	Download	For transferring tracks and / or playlists from PC to player
	Upload	For transferring playlists created on player to PC
	Selection indicator	Indicates selected items
	New tracks	New tracks available for transfer from PC to player
	Preview	Indicates the track is being played by DMM upon double-clicking on a track
	Sort	List music tracks / playlists in ascending / descending Artist,Album, Genre,All tracks order

In addition, there is a dynamic status bar in **My Player** that indicates available space on hdd.

DMM Actions and Settings (1)

Use menus to customize DMM:

File	
Exit	For exiting DMM
Edit	
User name / player name	For changing the names of the user and hdd
View	
Small screen view	For displaying a smaller DMM window
Large screen view	For displaying a larger DMM window
Preferences	
Edit user / player name	For changing the name of the user and hdd
Select language	For selecting a language for DMM
Media folders	For adding, deleting or re-arranging your Media Folders
Transfer options	For selecting transfer options
Check for player firmware upgrade...	For getting instant access to PHILIPS site
Firmware upgrade tool...	For upgrading new hdd firmware
Check for DMM software upgrade...	For getting instant access to PHILIPS site

DMM Actions and Settings (2)

Help

DMM Help Supply you with additional help and tips

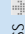
About DMM For software version information

About Player For hdd information

Connect to support site For getting instant access to PHILIPS site for FAQ, manuals, upgrades, etc. Enter your model name hdd when needed.

Transferring your music tracks

ENGLISH

- 1 Highlight one or more music tracks you want to transfer by clicking on their checkboxes.
- 2 Press  or drag and drop. Then wait for the procedure to complete. It takes 15 to 20 minutes to transfer 100 music tracks (4MB each).

Tip

If items selected for transfer already exist on **PC Library** and / or **My Player**, transfer will proceed according to your selected option:

- Always overwrite (overwrite all tracks that already exist).
- Always skip(do not transfer any of the tracks).

IMPORTANT:

RETAIN YOUR ORIGINAL FILES!

Please ensure that you retain the original files transferred to hdd. Philips is not responsible for any loss of content in the case if the product becomes damaged or the hard disk not readable.

Firmware and software upgrades

For best interaction between your hdd and your PC, check www.philips.com/support for the latest upgrades available.

- 1 You can download the latest upgrade files from www.philips.com/support. You may need to enter the model number e.g. hdd, to access the upgrade file. Make sure you save the file(s) in a folder on your PC. Unzip them before you install the upgrade.
- 2 To upgrade firmware, make sure you connect hdd to your PC and to the main power supply. Click **Preferences** → **Firmware upgrade tool** from the DMM main screen. Follow screen instructions to complete firmware upgrade.
- 3 To upgrade DMM, unzip the latest upgrade files. Make sure you save the file(s) in a folder on your PC. Click on the exe file. Follow screen instructions to uninstall your existing DMM. Click on the exe file again. Follow screen instructions to complete DMM upgrade.

Troubleshooting

ENGLISH

If a fault occurs, first check the points listed in the following pages. For further help and other troubleshooting tips, please also check out hdd FAQ at www.philips.com/support.

If you are unable to find a solution by following these hints, consult your dealer or service center.

WARNING:

Do not open the set as there is a risk of electric shock! Under no circumstances should you try to repair the set yourself, as this will invalidate the warranty.


Q. My hdd does not respond.

Press and hold ▲ + [VOLUME +] to reset. File contents e.g. your songs or downloaded files on your hdd is not affected when resetting in this way.

Q. I can't play my music tracks.

hdd can only play MP3 / WMA files transferred through DMM. hdd will not be able to play audio files that are not of these formats.

Q. I can't see new tracks in DMM.

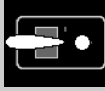
Specify your Media Folders through **Preferences** → **Media folder** and click  .

Q. I cannot transfer from MY PLAYER to PC LIBRARY.

This is not an error. DMM can only transfer music tracks from **PC Library** to **My Player**, subject to Digital Rights Management.

Safety & Maintenance

ENGLISH

<p>Q. DMM stops responding during file transfer. Transferring 100 music tracks may take up to 20 minutes. Wait for transfer to complete. Alternatively exit DMM using Windows' task manager and restart DMM.</p>	<p>Q. My hdd has short playback time. Over time, the internal rechargeable battery will become weaker. It is replaceable. Please contact your nearest Philips Service Center for a battery replacement.</p>	<p>Q. My hdd shows this [file error] icon.  You have a file error: system files may be missing or there is a format error on hdd. To remedy please connect hdd to your PC and to the main power supply and start DMM. The database will be recreated automatically.</p>	<p>Q. My hdd shows this [disk error] icon.  You have a serious error with your hdd, possibly caused by a faulty hard disk drive. Please consult your dealer or service center. For more information visit www.philips.com/support.</p>	<p>Q. How do I know which firmware version I have? On your hdd, you can check your firmware version from the menu options. Scroll for Menu → Settings → Information to display "FW vers.". Otherwise, you can check this with DMM by clicking Help → About player.</p>	<p>Q. How do I know how much free space I have? On your hdd, you can check your hdd free space from the menu options. Scroll for Menu → Settings → Information to display "Free.". Otherwise, you can check this with DMM from the status bar, where information on free space is provided.</p>
---	--	---	---	---	--

To get the most from your product, please also refer to the **Safety & Warranty** booklet supplied with this device for important safety instructions.

About Operating and Storage Temperatures

- Operate hdd in a place where the temperature is always between 0 and 35° C (32 to 95° F).
- Store hdd in a place where the temperature is always between -20 and 45° C (-4 to 113° F).
- Battery life of hdd may shorten in low temperature conditions.
- **Do not expose to excessive heat** caused by heating equipment or direct sunlight.
- When you are using hdd, connecting it to your PC or charging the battery it is normal for hdd to become warm. The rear panel case functions as a cooling surface that transfers heat from inside the unit to the cooler air outside.
- hdd is not recommended for using during vigorous exercising. hdd is **not shock-proof** and may be damaged when subjected to excessive vibrations.

Avoiding Damage or Malfunction

- **Backup your files.** Please ensure that you retain the original files that you have downloaded to hdd. Philips is not responsible for any loss of content in the case if the product becomes damaged or the hard disk not readable / legible.
- Manage (transfer, delete, etc.) your files only through **Philips Digital Media Manager (DMM)** to avoid problems!
- **Do not drop** hdd or allow objects to fall on hdd.
- **Do not allow** hdd to be submerged in **water**. Do not expose connection jacks to water as water entering the set may cause major damage.
- Clean hdd with a slightly damp cloth. Don't use any cleaning agents containing alcohol, ammonia, benzene or abrasives as these may harm the finishing on hdd.
- Active mobile phones in the vicinity may cause interference to the device.

Using the Power Adapter /Charger

- Use only the **AV3192** power adapter that came with hdd. Adapters for other electronic devices may look similar, but they may damage hdd.
- The only way to shut off power completely to your power adapter/charger is to disconnect it from the power source.
- Always leave space around your power adapter. Do not use this equipment in a location where airflow around the power adapter is confined, such as a bookcase.
- When connecting or disconnecting your power adapter, always hold the power adapter by its sides. Keep fingers away from the metal part of the plug.
- The power adapter for hdd is a high-voltage component and should not be opened for any reason, even when hdd is off.

20

Using Your Headphones

ENGLISH

Hearing safety

Listen at a moderate volume. Using headphones at high volume can impair your hearing.

Traffic safety


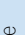
Do not use while driving or cycling as you may cause an accident.

Optimizing playback performance

We recommend to only use PHILIPS headphones for hdd. Music volume and / or quality is not guaranteed for other non-PHILIPS headphones.

Using DMM

Avoid the risk of corrupting and losing data with the following precautions when using DMM:

- Never disconnect the USB cable while file transfer is in progress. For **Windows 2000, XP or ME** always disconnect hdd properly from your PC using the  icon. **WINDOWS 98SE users:** there is no  icon. Simply disconnect hdd after file transfer completes.
- Never close DMM while file transfer is in progress.
- **Operate using one file management system only.** When transferring files, do not attempt to transfer files via Windows Explorer whilst waiting for transfer to complete on DMM.
- Do not delete any track via **Windows Explorer** when file transfer is active in DMM. If you wish to delete a file, please only do so from either DMM or from Windows Explorer after file transfer completes.

21

MECHANICAL INTRUCTIONS

Set Disassembly

1 - Remove 2 x screw. See arrows
2 - Remove CAP right and left

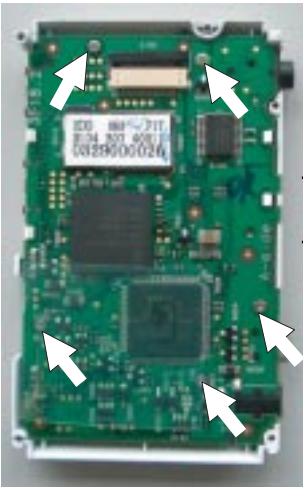


3 - Remove 4 x screw. See arrows
4 - Remove bottompart.

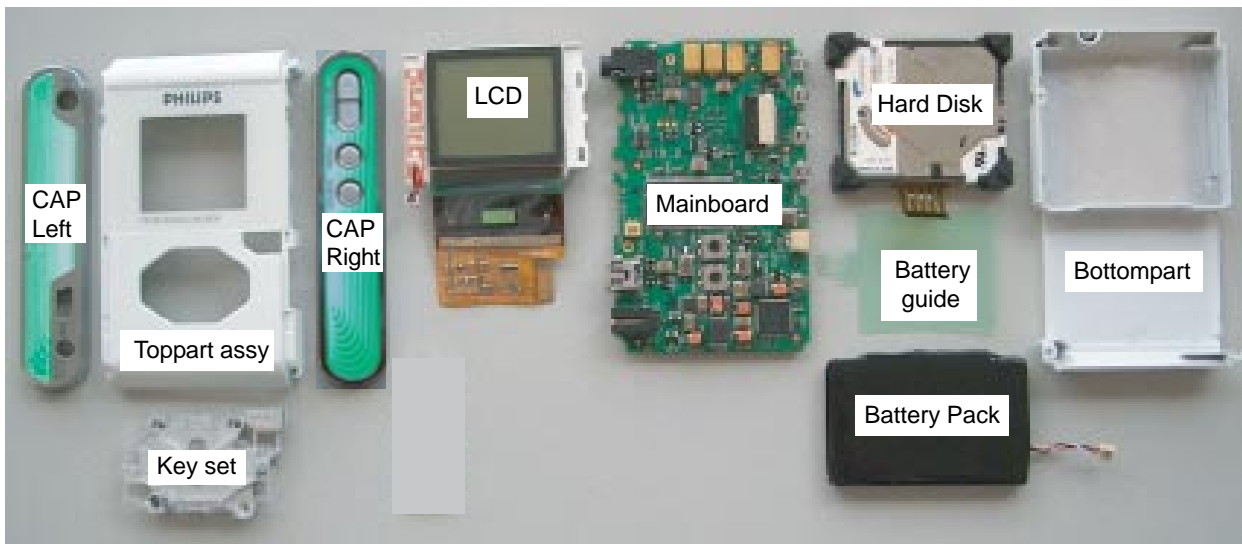
5 - Remove Harddisk

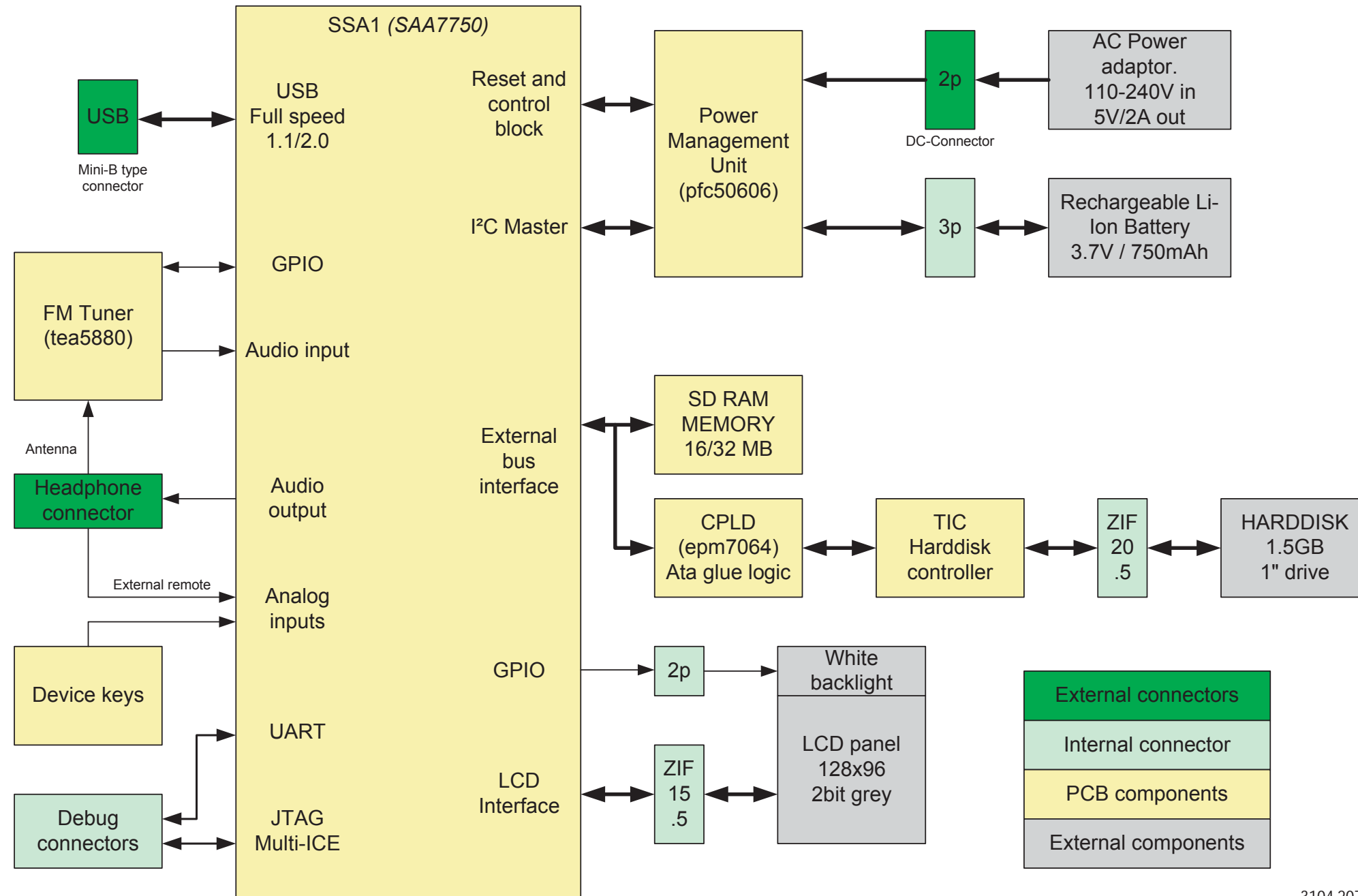


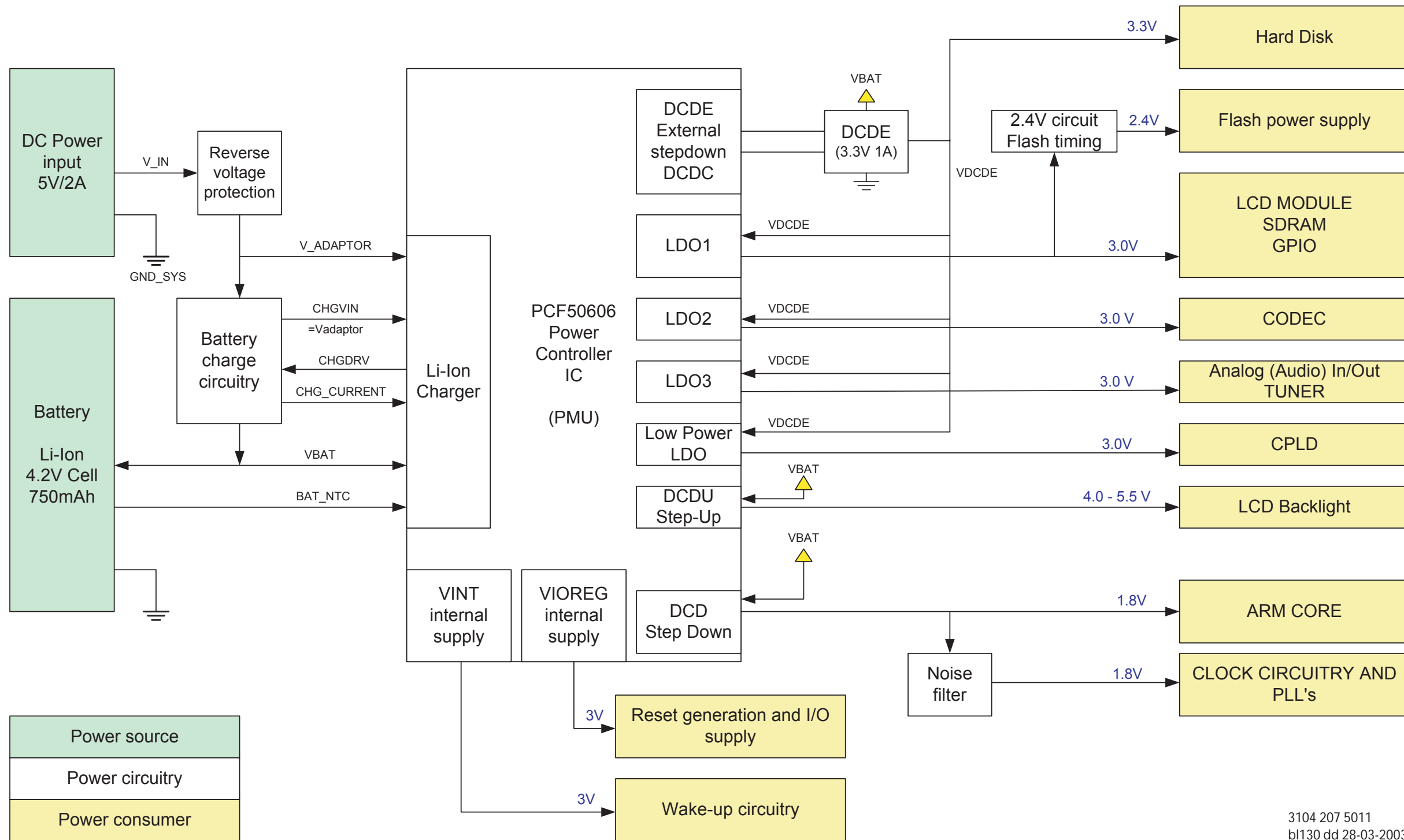
6 - Remove 5 x screw. See arrows



Overview disassembly parts

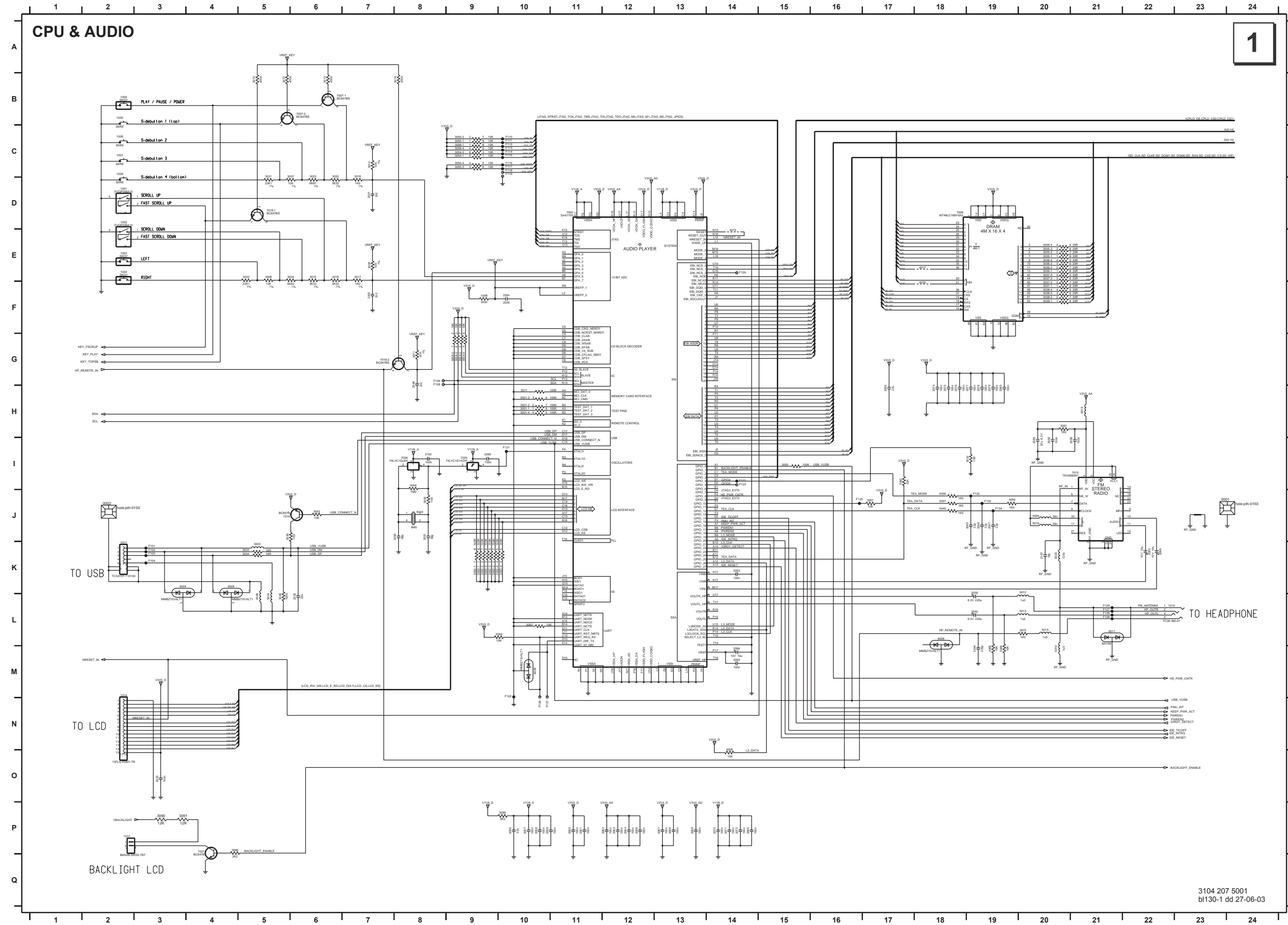






ELECTRICAL DIAGRAM

For reference only

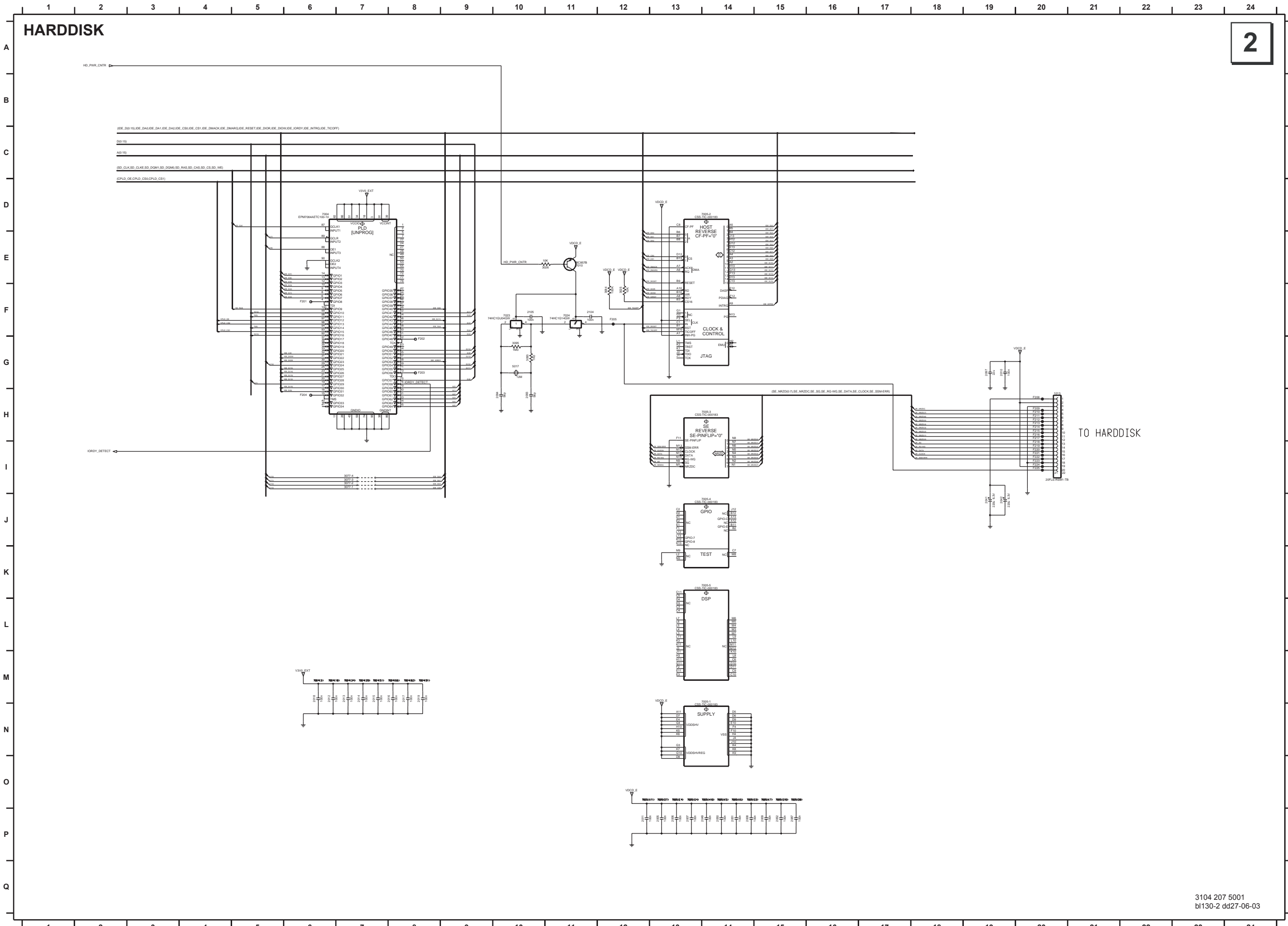


1

0001	J24	3038-1	F 20
0002	J2	3038-2	F 20
1001	D2	3038-3	F 20
1002	E 2	3038-4	F 20
1003	E 2	3039	J6
1004	E 2	3046	L 5
1005	B2	3049	J18
1006	C2	3053	J6
1007	C2	3054-1	C9
1008	D2	3054-2	G 9
1009	B2	3054-3	C9
1010	L 22	3054-4	G 9
1011	K2	3055-1	C9
1014	N2	3055-2	C9
1017	P 3	3055-3	C9
2001	D7	3055-4	C9
2002	F 7	3056-1	C9
2025	O 3	3056-2	G 9
2030	F 10	3056-3	G 9
2035	L 6	3056-4	C9
2039	L 19	3057	J18
2040	L 19	3058	J18
2044	M19	3059	J19
2047	J19	3061	H20
2046	J19	3062	I 17
2047	J19	3063	L 10
2048	G 8	3064	L 10
2053	K14	3065	M19
2054	M14	3066	M19
2055	I 20	3067	J17
2057	P 10	3071	G 8
2057	P 10	3072	B5
2059	P 10	3073	B5
2059	P 11	3074	B8
2060	P 11	3075	L 20
2061	P 11	3089	P 10
2062	P 12	3090	P 3
2063	P 12	3091	P 3
2064	P 12	3092	J8
2065	P 14	3094	I 8
2066	P 14	3096	P 4
2067	P 13	4015	E 14
2068	P 13	4017	E 18
2069	P 13	4019	E 18
2070	P 14	4020	F 18
2071	P 14	4024	F 18
2072	P 14	5003	K5
2074	H18	5004	L 5
2075	H18	5005	J20
2076	H18	5006	L 5
2077	H19	5012	L 20
2078	H19	5013	L 20
2079	H19	5014	M20
2080	H19	5015	L 20
2083	I 20	5016	J8
2084	M14	5018	J20
2085	K22	5019	H21
2086	K22	5020	K20
2091	J8	6004	K3
2092	J8	6005	K4
2095	H17	6006	L 18
2096	P 10	6009	M20
2099	I 8	6011	L 21
2100	I 8	7002	I 2
2107	K20	7007-1	B6
3001-1	H10	7007-2	B5
3001-2	H10	7008	E 19
3001-3	H10	7015	J21
3001-4	H10	7016	J6
3002-1	K9	7018-1	D5
3002-2	K9	7018-2	G 8
3002-3	K9	7021	P 4
3002-4	K10	7025	I 9
3003-1	K9	7026	I 8
3003-2	K9	F101	K3
3003-3	K9	F102	K3
3003-4	K10	F103	K3
3005	I 15	F104	K3
3006	O 14	F105	M10
3007	D6	F106	M10
3008	E 5	F107	M10
3009	E 7	F108	G 8
3010	C7	F109	G 8
3011	H10	F110	C10
3013	B6	F111	C10
3015	E 6	F112	C10
3016	E 6	F113	C10
3017	E 7	F114	C10
3018	D7	F115	C10
3020	D6	F116	C10
3021	D5	F117	C10
3022	E 5	F118	C10
3023	D6	F119	C10
3024	E 6	F120	E 14
3030	F 9	F121	I 10
3031	H19	F122	I 14
3032	I 19	F123	I 14
3033	K5	F125	J16
3034	K5	F126	L 21
3035-1	E 20	F127	L 21
3035-2	E 20	F128	L 21
3035-3	E 20	F129	L 21
3035-4	E 20	F132	J19
3036-1	E 20	F133	J19
3036-2	E 20	F134	J19
3036-3	E 20		
3036-4	E 20		
3037-1	F 20		
3037-2	F 20		
3037-3	E 20		
3037-4	E 20		

ELECTRICAL DIAGRAM

For reference only

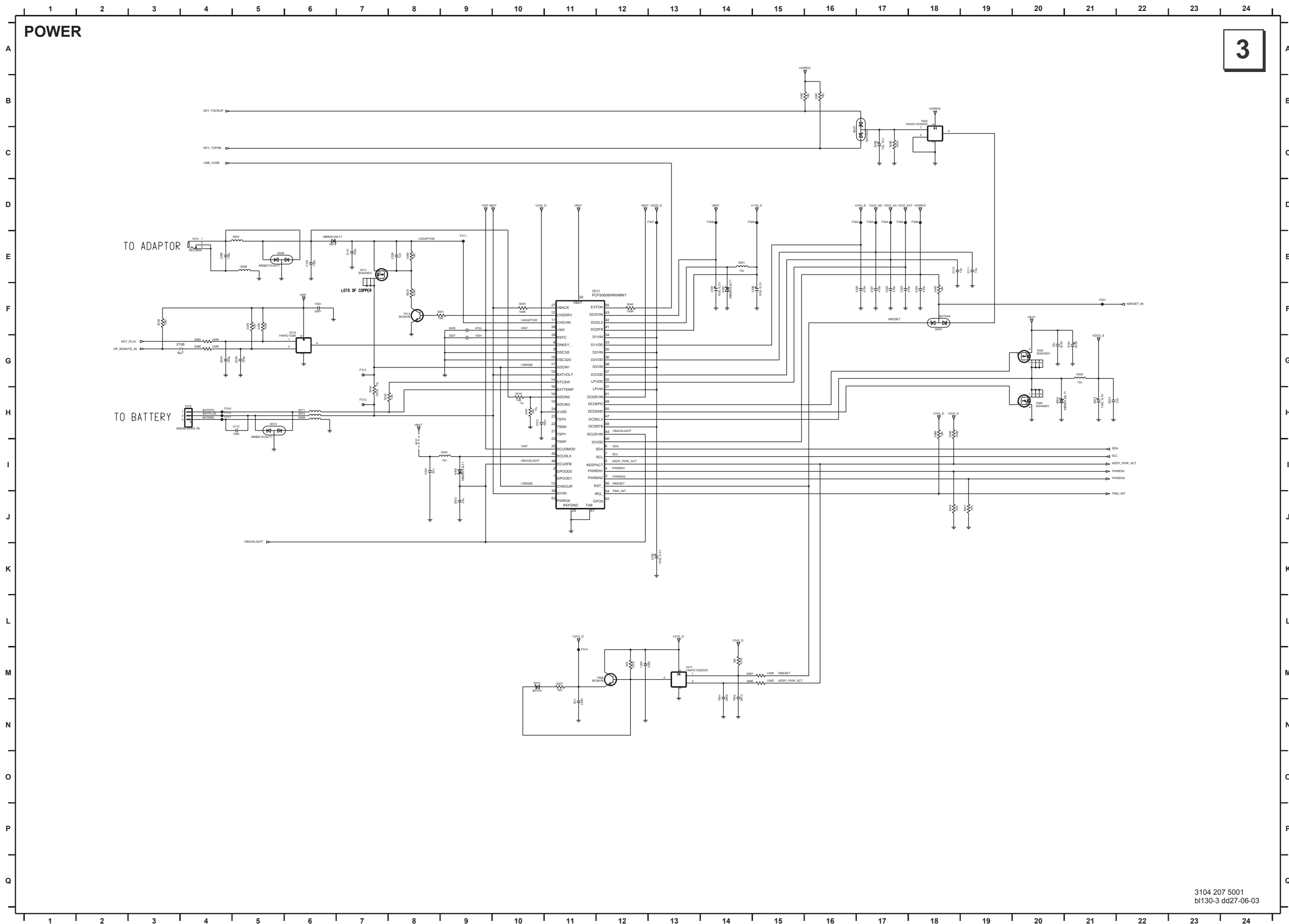


2

- 1013 H20
- 2005 P 13
- 2006 P 13
- 2007 P 13
- 2008 P 14
- 2009 P 15
- 2010 G 19
- 2011 P 12
- 2012 M6
- 2013 M7
- 2014 M7
- 2015 M7
- 2016 M8
- 2017 M8
- 2018 M6
- 2019 M8
- 2041 J19
- 2042 J19
- 2049 P 14
- 2050 P 14
- 2051 P 14
- 2052 P 15
- 2087 P 15
- 2093 H10
- 2094 H10
- 2097 G 19
- 2104 F 11
- 2105 F 10
- 2108 D22
- 2109 D22
- 3025 F 12
- 3026 E 11
- 3077-1 I 7
- 3077-2 I 7
- 3077-3 I 7
- 3077-4 I 7
- 3083 B19
- 3084 F 12
- 3093 G 10
- 3095 G 10
- 4011-1 K7
- 4011-2 K7
- 4011-3 K7
- 4011-4 K7
- 4012-1 J7
- 4012-2 J7
- 4012-3 J7
- 4012-4 K7
- 4013-1 J7
- 4013-2 J7
- 4013-3 J7
- 4013-4 J7
- 4014-1 K7
- 4014-2 K7
- 4014-3 K7
- 4014-4 K7
- 4018 J7
- 4025 C20
- 5017 G 10
- 7004 D6
- 7005-1 M14
- 7005-2 D14
- 7005-3 H14
- 7005-4 J14
- 7005-5 K14
- 7010 E 11
- 7023 F 10
- 7024 F 11
- 7027 D19
- 7028 D20
- F201 F 6
- F202 G 8
- F203 G 8
- F204 H6
- F205 F 12
- F206 H20
- F209 H20
- F210 H20
- F211 H20
- F212 H20
- F213 H20
- F214 H20
- F215 H20
- F216 H20
- F217 H20
- F218 I 20
- F219 I 20
- F220 I 20
- F221 I 20
- F222 I 20
- F223 I 20
- F224 I 20
- F225 I 20

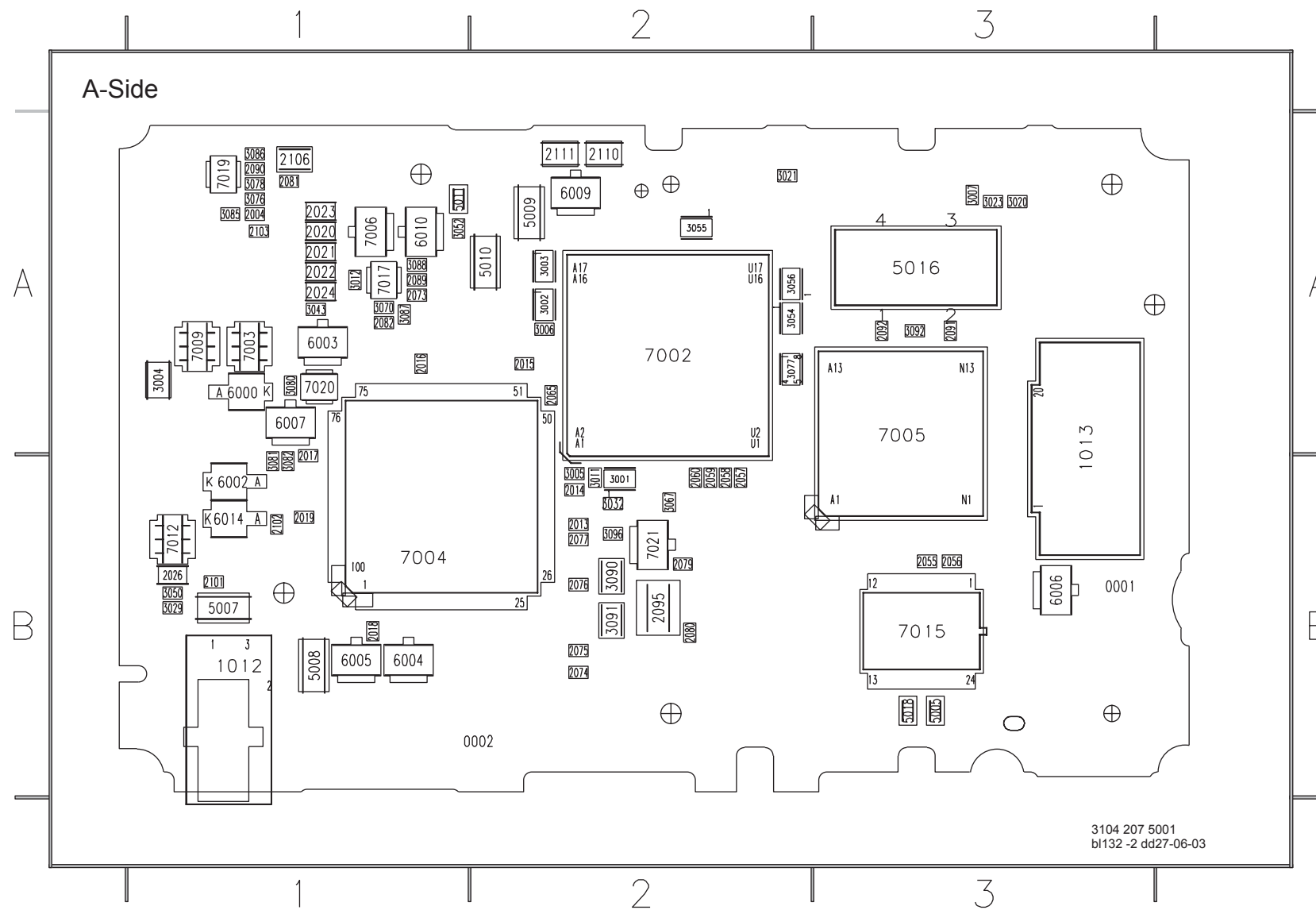
ELECTRICAL DIAGRAM

For reference only



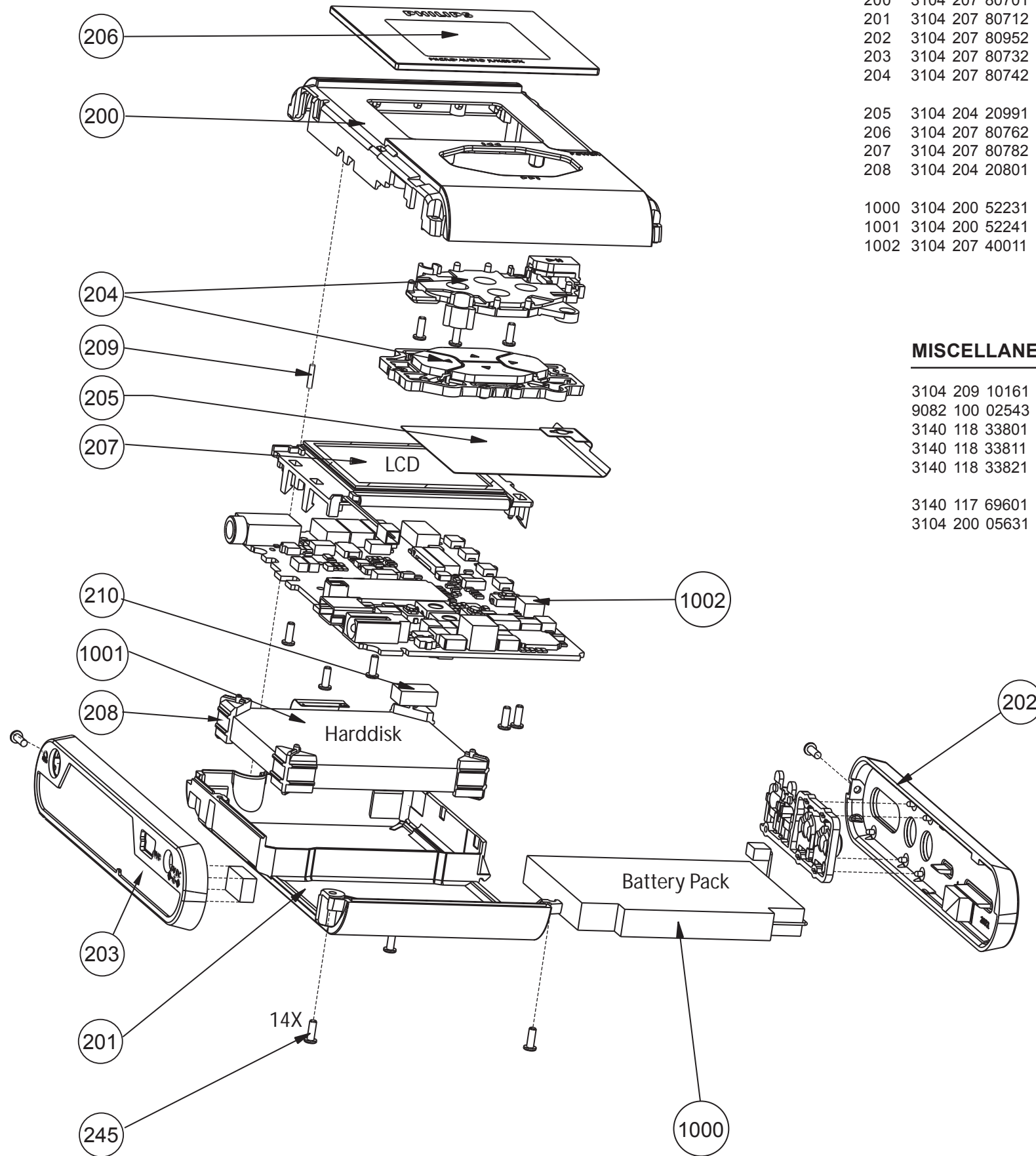
3

- 1012 E 4
- 1015 H 4
- 2003 H 21
- 2004 G 4
- 2020 F 17
- 2021 F 17
- 2022 F 17
- 2023 F 17
- 2024 F 18
- 2026 E 8
- 2027 G 9
- 2028 F 9
- 2029 G 21
- 2031 I 8
- 2032 J 9
- 2033 G 20
- 2034 H 21
- 2036 F 15
- 2037 F 14
- 2038 K 13
- 2043 N 11
- 2073 M 14
- 2081 F 6
- 2082 M 12
- 2088 C 17
- 2089 M 14
- 2090 G 5
- 2098 E 4
- 2101 E 7
- 2102 E 6
- 2103 H 10
- 2106 G 4
- 2110 E 18
- 2111 E 19
- 2112 H 5
- 3004 H 7
- 3012 M 12
- 3014 H 7
- 3019 H 10
- 3027 M 11
- 3028 F 3
- 3029 F 8
- 3040 H 18
- 3041 H 10
- 3043 F 18
- 3044 F 10
- 3045 F 12
- 3048 J 18
- 3050 E 8
- 3051 F 9
- 3052 H 7
- 3060 H 18
- 3070 M 14
- 3076 F 5
- 3078 F 5
- 3080 C 17
- 3081 B 16
- 3082 B 15
- 3085 G 4
- 3086 G 4
- 3087 M 14
- 3088 M 14
- 4021 I 8
- 4022 I 8
- 4023 G 6
- 5000 G 21
- 5001 E 14
- 5002 I 9
- 5007 E 5
- 5008 E 5
- 5009 H 6
- 5010 H 6
- 5011 H 6
- 6000 H 20
- 6001 F 14
- 6002 I 9
- 6003 F 18
- 6007 C 16
- 6008 E 5
- 6010 H 5
- 6012 M 10
- 6013 D 7
- 6014 E 6
- 7003 G 20
- 7006 M 12
- 7009 H 20
- 7011 F 11
- 7012 E 7
- 7014 F 8
- 7017 M 13
- 7019 F 6
- 7020 B 18
- F301 F 21
- F302 D 16
- F303 D 17
- F304 D 17
- F305 D 17
- F306 D 18
- F307 D 13
- F308 D 14
- F309 D 14
- F311 E 9
- F312 G 7
- F313 H 7
- F314 M 11
- F315 H 4
- F316 H 4
- F317 H 4



1013	A3	3001	B2	4025	A1
2004	A1	3002	A2	5005	B3
2013	B2	3003	A2	5007	B1
2014	B2	3004	A1	5008	B1
2015	A2	3005	B2	5009	A2
2016	A1	3006	A2	5010	A2
2017	B1	3007	A3	5011	A1
2018	B1	3011	B2	5016	A3
2019	B1	3012	A1	5018	B3
2020	A1	3020	A3	6000	A1
2021	A1	3021	A2	6002	B1
2022	A1	3023	A3	6003	A1
2023	A1	3029	B1	6004	B1
2024	A1	3031	B2	6005	B1
2026	B1	3032	B2	6006	B3
2055	B3	3043	A1	6007	A1
2056	B3	3050	B1	6009	A2
2057	B2	3052	A1	6010	A1
2058	B2	3054	A2	6013	B1
2059	B2	3055	A2	6014	B1
2060	B2	3056	A2	7002	A2
2065	A2	3067	B2	7003	A1
2073	A1	3070	A1	7004	B1
2074	B2	3076	A1	7005	A3
2075	B2	3077	A2	7006	A1
2076	B2	3078	A1	7009	A1
2077	B2	3080	A1	7012	B1
2079	B2	3081	B1	7015	B3
2080	B2	3082	B1	7017	A1
2081	A1	3083	B1	7019	A1
2082	A1	3085	A1	7020	A1
2089	A1	3086	A1	7021	B2
2090	A1	3087	A1	7027	B1
2091	A3	3088	A1	7028	A1
2092	A3	3090	B2		
2095	B2	3091	B2		
2101	B1	3092	A3		
2102	B1	3096	B2		
2103	A1	4011	B2		
2106	A1	4012	B2		
2108	A2	4013	B2		
2109	B1	4014	B2		
2110	A2	4018	A2		
2111	A2	4023	A1		

EXPLODED VIEW



MECHANICAL PARTS

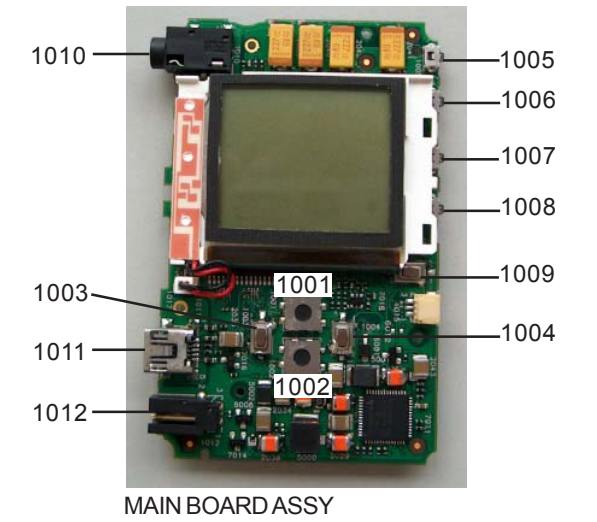
200	3104 207 80701	TOPPARTASSY
201	3104 207 80712	BOTTOMPARTASSY
202	3104 207 80952	CAP RIGHTASSY
203	3104 207 80732	CAP LEFTASSY
204	3104 207 80742	KEYSETASSY
205	3104 204 20991	BATTERY GUIDE
206	3104 207 80762	WINDOWASSY
207	3104 207 80782	LCDASSY
208	3104 204 20801	HARD DISK SNUGGER
1000	3104 200 52231	BATTERYPACK
1001	3104 200 52241	HARD DISK
1002	3104 207 40011	MAIN BOARDASSY

MISCELLANEOUS

3104 209 10161	CD-ROM - IFU
9082 100 02543	HEADPHONE HE570/77T
3140 118 33801	AC/DC ADAPTOR HDD060/00
3140 118 33811	AC/DC ADAPTOR HDD060/05
3140 118 33821	AC/DC ADAPTOR HDD060/17
3140 117 69601	USB CABLE
3104 200 05631	NECKSTRAP

ELECTRICAL PARTS

1001	2422 128 03084	SWI TACT 1P 2POS 15V V
1002	2422 128 03084	SWI TACT 1P 2POS 15V V
1003	2422 128 03083	SWI TACT 1P 1POS 12V V
1004	2422 128 03083	SWI TACT 1P 1POS 12V V
1005	2422 128 03082	SWI TACT 1P 1POS 12V H
1006	2422 128 03082	SWI TACT 1P 1POS 12V H
1007	2422 128 03082	SWI TACT 1P 1POS 12V H
1008	2422 128 03082	SWI TACT 1P 1POS 12V H
1009	2422 128 03083	SWI TACT 1P 1POS 12V V
1010	2422 026 05331	SOC PHONE H 1P F 3.5 ST
1011	2422 025 17684	SOC USB H 5P F SM
1012	2422 030 00394	SOC SUPP H 1P DC 1.65MM



Note: Only the parts mentioned in this list are normal service parts

ELECTRICAL PARTS LIST

For reference only

MISCELLANEOUS

1001 2422 128 03084 SWI TACT 1P 2POS 15V V
 1002 2422 128 03084 SWI TACT 1P 2POS 15V V
 1003 2422 128 03083 SWI TACT 1P 1POS 12V V
 1004 2422 128 03083 SWI TACT 1P 1POS 12V V
 1005 2422 128 03082 SWI TACT 1P 1POS 12V H

1006 2422 128 03082 SWI TACT 1P 1POS 12V H
 1007 2422 128 03082 SWI TACT 1P 1POS 12V H
 1008 2422 128 03082 SWI TACT 1P 1POS 12V H
 1009 2422 128 03083 SWI TACT 1P 1POS 12V V
 1010 2422 026 05331 SOC PHONE H 1P F 3.5 ST

1011 2422 025 17684 SOC USB H 5P F SM
 1012 2422 030 00394 SOC SUPP H 1P DC 1.65MM
 1013 2422 025 18201 CON H 20P F 0.50 SM
 1014 2422 025 18199 CON H 15P F 0.50 SM
 1015 2422 025 17614 CON H 3P M 1.00 SM

1017 2422 025 17887 CON V 2P M 1.00 SM

CAPACITORS

2001 2238 587 15627 CER2 0402 X7R 50V 2N2 PM10
 2002 2238 587 15627 CER2 0402 X7R 50V 2N2 PM10
 2003 2022 030 00069 TANCAP SM 6V3 100U PM20
 2004 2238 869 15101 CER1 0402 NP0 50V 100P PM5
 2005 2238 787 19849 CER2 0402 Y5V 16V 100N P8020

2006 2238 787 19849 CER2 0402 Y5V 16V 100N P8020
 2007 2238 787 19849 CER2 0402 Y5V 16V 100N P8020
 2008 2238 787 19849 CER2 0402 Y5V 16V 100N P8020
 2009 2238 787 19849 CER2 0402 Y5V 16V 100N P8020
 2010 2238 787 19849 CER2 0402 Y5V 16V 100N P8020

2011 2238 787 19849 CER2 0402 Y5V 16V 100N P8020
 2012 2238 787 19849 CER2 0402 Y5V 16V 100N P8020
 2013 2238 787 19849 CER2 0402 Y5V 16V 100N P8020
 2014 2238 787 19849 CER2 0402 Y5V 16V 100N P8020
 2015 2238 787 19849 CER2 0402 Y5V 16V 100N P8020

2016 2238 787 19849 CER2 0402 Y5V 16V 100N P8020
 2017 2238 787 19849 CER2 0402 Y5V 16V 100N P8020
 2018 2238 787 19849 CER2 0402 Y5V 16V 100N P8020
 2019 2238 787 19849 CER2 0402 Y5V 16V 100N P8020
 2020 2238 246 19858 CER2 0603 Y5V 10V 470N P8020

2021 2238 246 19858 CER2 0603 Y5V 10V 470N P8020
 2022 2238 246 19858 CER2 0603 Y5V 10V 470N P8020
 2023 2238 246 19858 CER2 0603 Y5V 10V 470N P8020
 2024 2238 246 19858 CER2 0603 Y5V 10V 470N P8020
 2025 2238 787 19849 CER2 0402 Y5V 16V 100N P8020

2026 2020 552 96807 CER2 0603 X5R 10V 1U PM10
 2027 2238 787 19849 CER2 0402 Y5V 16V 100N P8020
 2028 2238 246 19858 CER2 0603 Y5V 10V 470N P8020
 2029 2022 030 00069 TANCAP SM 594D 6V3 100U PM20
 2030 2238 786 19854 CER2 0603 Y5V 16V 220N P8020

2031 2020 552 96835 CER2 1210 X5R 6V3 22U PM10
 2032 2020 552 96835 CER2 1210 X5R 6V3 22U PM10
 2033 2020 552 96835 CER2 1210 X5R 6V3 22U PM10
 2034 2020 552 96835 CER2 1210 X5R 6V3 22U PM10
 2035 2020 552 96835 CER2 1210 X5R 6V3 22U PM10

2036 2022 030 00069 TANCAP SM 594D 6V3 100U PM20
 2037 2022 030 00069 TANCAP SM 594D 6V3 100U PM20
 2038 2022 030 00069 TANCAP SM 594D 6V3 100U PM20

CAPACITORS

2039 2020 004 90314 TANCAP SM F93 6V3 220U PM20
 2040 2020 004 90314 TANCAP SM F93 6V3 220U PM20
 2041 2020 004 90314 TANCAP SM F93 6V3 220U PM20
 2042 2020 004 90314 TANCAP SM F93 6V3 220U PM20
 2043 2020 552 96835 CER2 1210 X5R 6V3 22U PM10

2044 2238 587 15614 CER2 0402 X7R 50V 22P PM10
 2045 2238 869 15229 CER1 0402 NP0 50V 22P PM5
 2046 2238 869 15229 CER1 0402 NP0 50V 22P PM5
 2047 2238 869 15229 CER1 0402 NP0 50V 22P PM5
 2048 2238 587 15627 CER2 0402 X7R 50V 2N2 PM10

2049 2238 787 19849 CER2 0402 Y5V 16V 100N P8020
 2050 2238 787 19849 CER2 0402 Y5V 16V 100N P8020
 2051 2238 787 19849 CER2 0402 Y5V 16V 100N P8020
 2052 2238 787 19849 CER2 0402 Y5V 16V 100N P8020
 2053 2238 787 19849 CER2 0402 Y5V 16V 100N P8020

2054 2238 787 19849 CER2 0402 Y5V 16V 100N P8020
 2055 2238 787 19849 CER2 0402 Y5V 16V 100N P8020
 2056 2238 787 19849 CER2 0402 Y5V 16V 100N P8020
 2057 2238 787 19849 CER2 0402 Y5V 16V 100N P8020
 2058 2238 787 19849 CER2 0402 Y5V 16V 100N P8020

2059 2238 787 19849 CER2 0402 Y5V 16V 100N P8020
 2060 2238 787 19849 CER2 0402 Y5V 16V 100N P8020
 2061 2238 787 19849 CER2 0402 Y5V 16V 100N P8020
 2062 2238 787 19849 CER2 0402 Y5V 16V 100N P8020
 2063 2238 787 19849 CER2 0402 Y5V 16V 100N P8020

2064 2238 787 19849 CER2 0402 Y5V 16V 100N P8020
 2065 2238 787 19849 CER2 0402 Y5V 16V 100N P8020
 2066 2238 787 19849 CER2 0402 Y5V 16V 100N P8020
 2067 2238 787 19849 CER2 0402 Y5V 16V 100N P8020
 2068 2238 787 19849 CER2 0402 Y5V 16V 100N P8020

2069 2238 787 19849 CER2 0402 Y5V 16V 100N P8020
 2070 2238 787 19849 CER2 0402 Y5V 16V 100N P8020
 2071 2238 787 19849 CER2 0402 Y5V 16V 100N P8020
 2072 2238 787 19849 CER2 0402 Y5V 16V 100N P8020
 2073 2238 869 15101 CER1 0402 NP0 50V 100P PM5

2074 2238 787 19849 CER2 0402 Y5V 16V 100N P8020
 2075 2238 787 19849 CER2 0402 Y5V 16V 100N P8020
 2076 2238 787 19849 CER2 0402 Y5V 16V 100N P8020
 2077 2238 787 19849 CER2 0402 Y5V 16V 100N P8020
 2078 2238 787 19849 CER2 0402 Y5V 16V 100N P8020

2079 2238 787 19849 CER2 0402 Y5V 16V 100N P8020
 2080 2238 787 19849 CER2 0402 Y5V 16V 100N P8020
 2081 2238 787 19849 CER2 0402 Y5V 16V 100N P8020
 2082 2238 787 19849 CER2 0402 Y5V 16V 100N P8020
 2083 2020 552 96835 CER2 1210 X5R 6V3 22U PM10

2084 2020 004 90315 TANCAP SM F93 10V 10U PM20
 2085 2020 004 90315 TANCAP SM F93 10V 10U PM20
 2086 2020 004 90315 TANCAP SM F93 10V 10U PM20
 2087 2238 787 19849 CER2 0402 Y5V 16V 100N P8020
 2088 2020 004 90315 TANCAP SM F93 10V 10U PM20

2089 2238 787 19849 CER2 0402 Y5V 16V 100N P8020
 2090 2238 869 15101 CER1 0402 NP0 50V 100P PM5
 2091 2238 869 15569 CER1 0402 NP0 50V 56P PM5
 2092 2238 869 15569 CER1 0402 NP0 50V 56P PM5
 2093 2238 869 15569 CER1 0402 NP0 50V 56P PM5

2094 2238 869 15569 CER1 0402 NP0 50V 56P PM5

ELECTRICAL PARTS LIST

For reference only

CAPACITORS

2095 2020 552 96835 CER2 1210 X5R 6V3 22U PM10
 2096 2020 552 96835 CER2 1210 X5R 6V3 22U PM10
 2097 2020 552 96835 CER2 1210 X5R 6V3 22U PM10
 2098 2238 787 19849 CER2 0402 Y5V 16V 100N P8020
 2099 2238 787 19849 CER2 0402 Y5V 16V 100N P8020

2100 2238 787 19849 CER2 0402 Y5V 16V 100N P8020
 2101 2238 787 19849 CER2 0402 Y5V 16V 100N P8020
 2102 2238 787 19849 CER2 0402 Y5V 16V 100N P8020
 2103 2238 787 19849 CER2 0402 Y5V 16V 100N P8020
 2104 2238 787 19849 CER2 0402 Y5V 16V 100N P8020

2105 2238 787 19849 CER2 0402 Y5V 16V 100N P8020
 2106 2020 552 96305 CER2 0805 Y5V 10V 4U7 P8020
 2107 2238 869 15189 CER1 0402 NP0 50V 18P PM5
 2110 2020 552 96637 CER2 0805 X5R 6V3 10U PM10
 2111 2020 552 96637 CER2 0805 X5R 6V3 10U PM10

2112 2238 787 19849 CER2 0402 16V 100N P8020

RESISTORS

3001 2350 033 10104 RST NETW SM 4X100K PM5
 3002 2350 033 10104 RST NETW SM 4X100K PM5
 3003 2350 033 10104 RST NETW SM 4X100K PM5
 3004 2350 511 17187 RST SM 0805 0R18 PM1
 3005 2322 705 70104 RST SM 0402 RC31 100K PM5

3006 2322 705 70103 RST SM 0402 RC31 10K PM5
 3007 2322 706 71003 RST SM 0402 RC32 10K PM1
 3008 2322 706 71003 RST SM 0402 RC32 10K PM1
 3009 2322 706 71003 RST SM 0402 RC32 10K PM1
 3010 2322 706 71003 RST SM 0402 RC32 10K PM1

3011 2322 705 70104 RST SM 0402 RC31 100K PM5
 3012 2322 705 70102 RST SM 0402 RC31 1K PM5
 3013 2322 705 70474 RST SM 0402 RC31 470K PM5
 3015 2322 706 73322 RST SM 0402 RC32 3K32 PM1
 3016 2322 706 73322 RST SM 0402 RC32 3K32 PM1

3017 2322 706 71002 RST SM 0402 RC32 1K PM1
 3018 2322 706 71002 RST SM 0402 RC32 1K PM1
 3019 2322 706 71003 RST SM 0402 RC32 10K PM1
 3020 2322 706 73322 RST SM 0402 RC32 3K32 PM1
 3021 2322 706 72213 RST SM 0402 RC32 22K1 PM1

3022 2322 706 72213 RST SM 0402 RC32 22K1 PM1
 3023 2322 706 76812 RST SM 0402 RC32 6K81 PM1
 3024 2322 706 75622 RST SM 0402 RC32 5K62 PM1
 3025 2322 705 70103 RST SM 0402 RC31 10K PM5
 3026 2322 705 70103 RST SM 0402 RC31 10K PM5

3027 2322 705 70102 RST SM 0402 RC31 1K PM5
 3028 2322 705 70105 RST SM 0402 RC31 1M PM5
 3029 2322 705 70101 RST SM 0402 RC31 100R PM5
 3030 2322 705 70101 RST SM 0402 RC31 100R PM5
 3032 2322 705 70103 RST SM 0402 RC31 10K PM5

3033 2322 705 70189 RST SM 0402 RC31 18R PM5
 3034 2322 705 70189 RST SM 0402 RC31 18R PM5
 3035 2350 033 10339 RST NETW SM 4X 33R PM5
 3036 2350 033 10339 RST NETW SM 4X 33R PM5
 3037 2350 033 10339 RST NETW SM 4X 33R PM5

3038 2350 033 10339 RST NETW SM 4X 33R PM5
 3039 2322 705 70152 RST SM 0402 RC31 1K5 PM5
 3040 2322 705 70104 RST SM 0402 RC31 100K PM5

RESISTORS

3041 2322 706 71003 RST SM 0402 RC32 10K PM1
 3043 2322 705 70103 RST SM 0402 RC31 10K PM5
 3044 2322 705 70104 RST SM 0402 RC31 100K PM5
 3045 2322 705 70104 RST SM 0402 RC31 100K PM5
 3046 2322 705 70104 RST SM 0402 RC31 100K PM5

3047 2322 705 70103 RST SM 0402 RC31 10K PM5
 3048 2322 705 70103 RST SM 0402 RC31 10K PM5
 3049 2322 705 70102 RST SM 0402 RC31 1K PM5
 3050 2322 705 70103 RST SM 0402 RC31 10K PM5
 3051 2322 705 70103 RST SM 0402 RC31 10K PM5

3052 2322 705 70103 RST SM 0402 RC31 10K PM5
 3053 2322 705 70103 RST SM 0402 RC31 10K PM5
 3054 2350 033 10103 RST NETW SM 4X 10K PM5
 3055 2350 033 10103 RST NETW SM 4X 10K PM5
 3056 2350 033 10103 RST NETW SM 4X 10K PM5

3057 2322 705 70102 RST SM 0402 RC31 1K PM5
 3058 2322 705 70102 RST SM 0402 RC31 1K PM5
 3059 2322 705 70102 RST SM 0402 RC31 1K PM5
 3060 2322 705 70103 RST SM 0402 RC31 10K PM5
 3061 2322 702 60108 RST SM 0603 RC21 1R PM5

3062 2322 705 70223 RST SM 0402 RC31 22K PM5
 3063 2322 705 70103 RST SM 0402 RC31 10K PM5
 3064 2322 705 70103 RST SM 0402 RC31 10K PM5
 3065 2322 705 70103 RST SM 0402 RC31 10K PM5
 3066 2322 705 70103 RST SM 0402 RC31 10K PM5

3067 2322 705 70103 RST SM 0402 RC31 10K PM5
 3070 2322 705 70103 RST SM 0402 RC31 10K PM5
 3071 2322 706 74703 RST SM 0402 RC32 47K PM1
 3072 2322 705 70474 RST SM 0402 RC31 470K PM5
 3073 2322 705 70474 RST SM 0402 RC31 470K PM5

3074 2322 705 70474 RST SM 0402 RC31 470K PM5
 3075 2322 705 70102 RST SM 0402 RC31 1K PM5
 3076 2322 705 70104 RST SM 0402 RC31 100K PM5
 3077 2350 033 91002 RST NETW SM 4X JUMPER R
 3078 2322 705 70105 RST SM 0402 RC31 1M PM5

3080 2322 705 70474 RST SM 0402 RC31 470K PM5
 3081 2322 705 70103 RST SM 0402 RC31 10K PM5
 3082 2322 705 70103 RST SM 0402 RC31 10K PM5
 3084 2322 705 70104 RST SM 0402 RC31 100K PM5
 3085 2322 705 70101 RST SM 0402 RC31 100R PM5

3086 2322 705 70101 RST SM 0402 RC31 100R PM5
 3087 2322 705 70101 RST SM 0402 RC31 100R PM5
 3088 2322 705 70101 RST SM 0402 RC31 100R PM5
 3089 2322 705 70338 RST SM 0402 RC31 3R3 PM5
 3090 2322 730 61129 RST SM 0805 RC11 12R PM5

3091 2322 730 61129 RST SM 0805 RC11 12R PM5
 3092 2322 705 70102 RST SM 0402 RC31 1K PM5
 3093 2322 705 70102 RST SM 0402 RC31 1K PM5
 3094 2322 705 70105 RST SM 0402 RC31 1M PM5
 3095 2322 705 70105 RST SM 0402 RC31 1M PM5

3096 2322 705 70222 RST SM 0402 RC31 2K2 PM5
 4015 2322 705 91001 RST SM 0402 JUMP.
 4017 2322 705 91001 RST SM 0402 JUMP.
 4020 2322 705 91001 RST SM 0402 JUMP.
 4021 2322 705 91001 RST SM 0402 JUMP.

ELECTRICAL PARTS LIST

For reference only

COILS & FILTERS

5000	2422 536 00403	IND FXD SM 2220	10U PM20
5001	2422 536 00676	IND FXD SM 1812	10U PM10
5002	2422 536 00592	IND FXD SM 1210	10U PM10
5003	2422 549 42979	IND FXD 0603 EMI	100MHZ 60R
5004	2422 549 42979	IND FXD 0603 EMI	100MHZ 60R
5005	2422 536 00709	IND FXD SM 0603	39N PM2
5006	2422 549 42979	IND FXD 0603 EMI	100MHZ 60R
5007	2422 549 45333	IND FXD 1206 EMI	100MHZ 120R
5008	2422 549 45333	IND FXD 1206 EMI	100MHZ 120R
5009	2422 549 45333	IND FXD 1206 EMI	100MHZ 120R
5010	2422 549 45333	IND FXD 1206 EMI	100MHZ 120R
5011	2422 549 42979	IND FXD 0603 EMI	100MHZ 60R
5012	2422 536 00675	IND FXD SM 0603	1U PM10
5013	2422 536 00675	IND FXD SM 0603	1U PM10
5014	2422 536 00675	IND FXD SM 0603	1U PM10
5015	2422 536 00675	IND FXD SM 0603	1U PM10
5016	2422 543 01402	RES XTL SM	6MHZ
5017	2422 543 01403	RES XTL SM	12MHZ
5018	2422 536 00709	IND FXD SM 0603	39N
5019	2422 549 42979	IND FXD 0603	100MHZ 60R
5020	2422 536 00711	IND FXD 0603	120N

DIODES

6000	9322 191 56685	DIO REC SM MBRM120L
6001	9322 191 56685	DIO REC SM MBRM120L
6002	9322 191 56685	DIO REC SM MBRM120L
6003	9339 763 60215	DIO SIG SM BAT54A
6004	9322 168 12685	DIO REG SM MMBZ15VAL
6005	9322 168 12685	DIO REG SM MMBZ15VAL
6006	9322 168 12685	DIO REG SM MMBZ15VAL
6007	9339 763 70215	DIO SIG SM BAT54C
6008	9322 168 12685	DIO REG SM MMBZ15VAL
6009	9322 168 12685	DIO REG SM MMBZ15VAL
6010	9322 168 12685	DIO REG SM MMBZ15VAL
6011	9332 153 70215	DIO SIG SM BAV99
6012	9337 422 80215	DIO SIG SM BAT54
6014	9322 191 56685	DIO REC SM MBRM120L

TRANSISTORS & IC's

7002	9352 719 97557	IC SM SAA7750EL_N102
7003	9322 140 10685	FET POW SM SI3443DV
7004	9322 145 58671	IC SM EPM7064AETC100
7005	9322 197 72671	IC SM CSS-TIC-000183
7006	9335 895 90215	TRA SIG SM BC847B
7007	9340 425 20115	TRA SIG SM BC847BS
7008	9322 185 41668	IC SM MT48LC16M16A2TG
7009	9322 141 94685	FET POW SM SI3446DV
7010	9335 897 60215	TRA SIG SM BC857B
7011	9352 736 65518	IC SM PCF50606HN_04B
7012	9322 140 10685	FET POW SM SI3443DV
7014	9335 895 90215	TRA SIG SM BC847B
7015	9352 726 43118	IC SM TEA5880TS_N1
7016	9335 897 60215	TRA SIG SM BC857B
7017	9352 627 56125	IC SM 74AHC1G32GW
7018	9340 425 20115	TRA SIG SM BC847BS
7019	9352 627 55115	IC SM 74AHC1G08GW
7020	9352 627 56125	IC SM 74AHC1G32GW
7021	9335 895 90215	TRA SIG SM BC847B
7023	9352 611 78165	IC SM 74HC1GU04GW
7024	9352 457 30125	IC SM 74HC1G14GW
7025	9352 685 95125	IC SM 74LVC1G14GW
7026	9352 685 96115	IC SM 74LVC1GU04GW